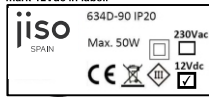


Using 12V Class III bulbs, electricians must mark 12Vdc in label.

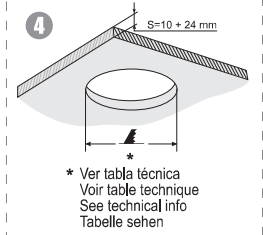
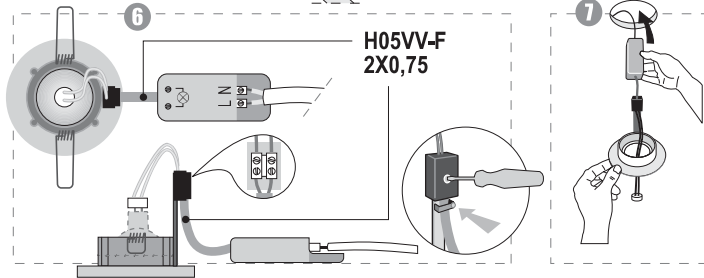
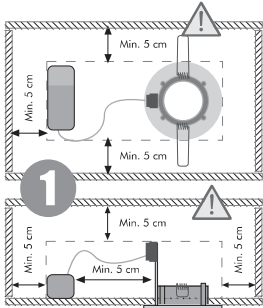


N: Azul, Blue, Bleu, Bleu.
L: Marrón, Verde, Negro, Brown, Green, Black, Marron, Vert, Noir, Marron, Grün, Schwarz....

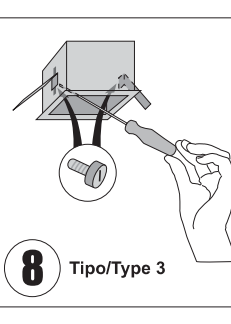
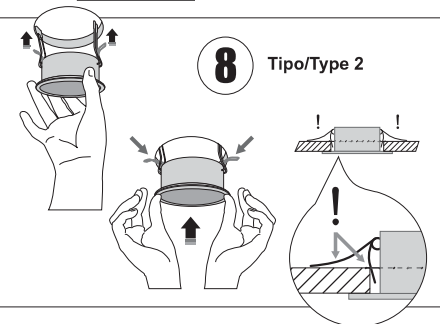
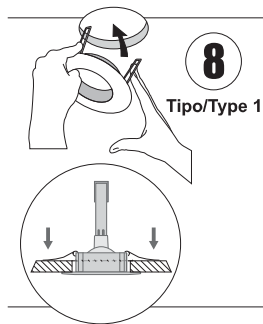
2 IP* Int.
IP* Ext.

Transformador de uso independiente. Conforme a las normativas vigentes.

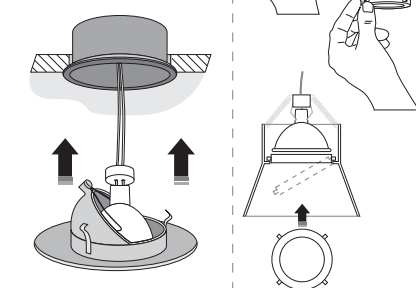
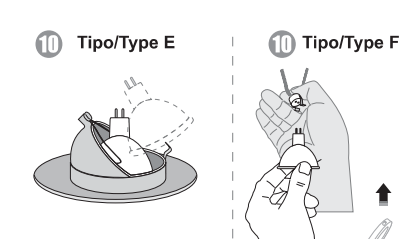
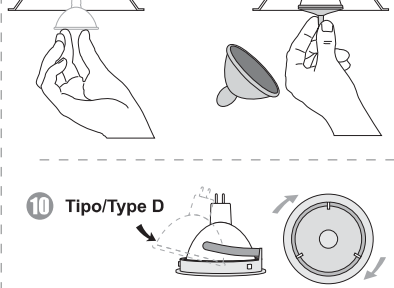
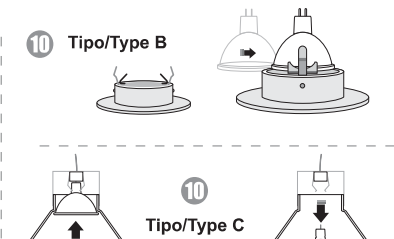
Transformer for independent use, according to the current rules



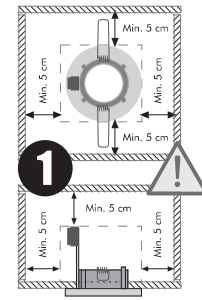
* Ver tabla técnica
Voir table technique
See technical info
Tabelle sehen



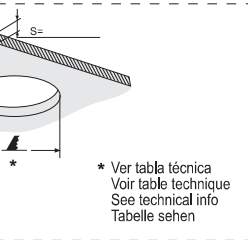
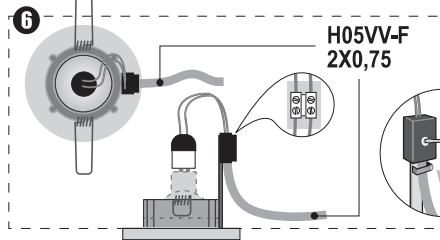
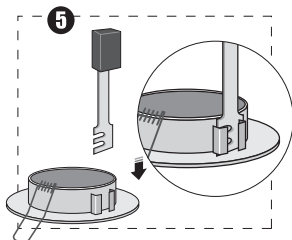
Tipo de lámpara
Type Bulb
Type de lamp
Lampe Model



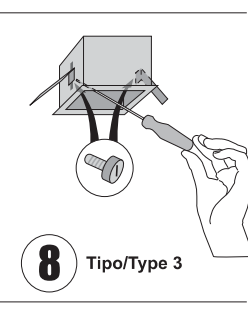
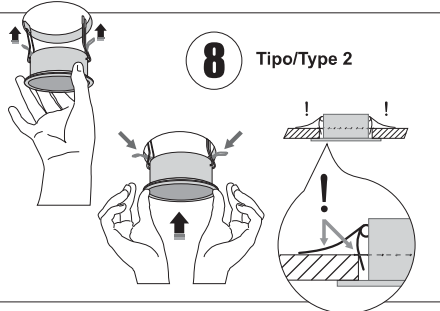
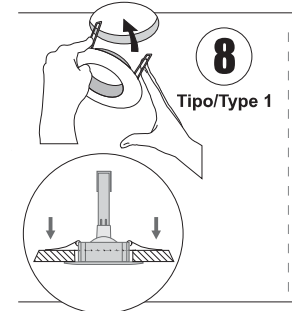
Using GU-10 bulbs with Class II connectors, electricians must mark 230Vac in label.



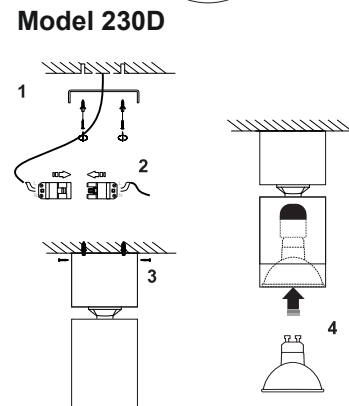
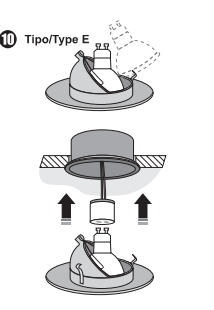
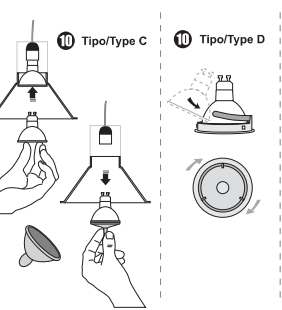
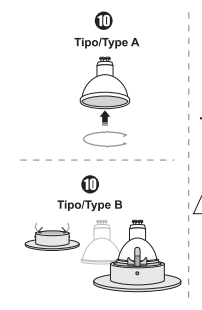
2 IP* Int.
IP* Ext.



* Ver tabla técnica
Voir table technique
See technical info
Tabelle sehen



9 Tipo de lámpara
Type Bulb
Type de lamp
Lampe Model



Model 230D